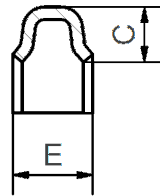


Pull ring profile



**Screw Connection**

- If necessary, correct the screw presetting
- Adjustment option to increase the connection strength and the tightness
- When using explosion pressure shock resistance 3bar required screw torque Ma = 10 Nm

\* 2=galvanized, 3= stainless Steel

Pipe	Ø 80	Ø 100	Ø 120	Ø 140	Ø 150	Ø 175	Ø 200	Ø 224
Article-no.	1208*903	1210*903	1212*903	1214*903	1215*903	1217*903	1220*903	1222*903
Ø A	100	123	143	159	173	198	223	243
Ø B	80	103	123	139	153	178	203	223
C	9	9	9	9,6	9,5	9,5	9,5	9,5
E	14	14	14	14,5	14,5	14,5	14,5	14,5
weight in kg	0,35	0,37	0,40	0,45	0,47	0,49	0,51	0,55
Pipe	Ø 250	Ø 280	Ø 300	Ø 315	Ø 350	Ø 400	Ø 450	Ø
Article-no.	1225*903	1228*903	1230*903	1231*903	1235*903	1240*903	1245*903	-
Ø A	273	301	323	336	373	423	472	-
Ø B	253	281	303	316	353	403	450	-
C	9,5	9,5	9,5	9,5	9,5	9,5	9,5	-
E	14,5	14,5	14,5	14,5	14,5	14,5	14,5	-
weight in kg	0,58	0,61	0,62	0,63	0,68	0,74	0,79	-

Denomination:

**Quick Connect pull-rings**

Date: 04/20

Datasheet-no. 2/1

Rev. 0